

The iMONITRAF! monitoring network

Indicators interpretation

Giordano Pession
ARPA Valle d'Aosta

2nd iMONITRAF! Transport Forum
Lucerne, 1. Dicembre 2011



Repubblica e Cantone
Ticino



Indicator dataset

- The IMonitraf! partnership analysed a set of 11 indicators in order to evaluate the transalpine traffic effects.

INDICATORS

n°01: Road traffic fluxes

n°02: Composition vehicle fleet

n°03: Rail traffic fluxes

n°04: Air pollutant emissions by road traffic

n°05: Air concentrations measured

n°06: Noise assessment

n°07: Toll prices

n°08: Fuel prices

n°09: GDP per inhabitant

n°10: Population exposed

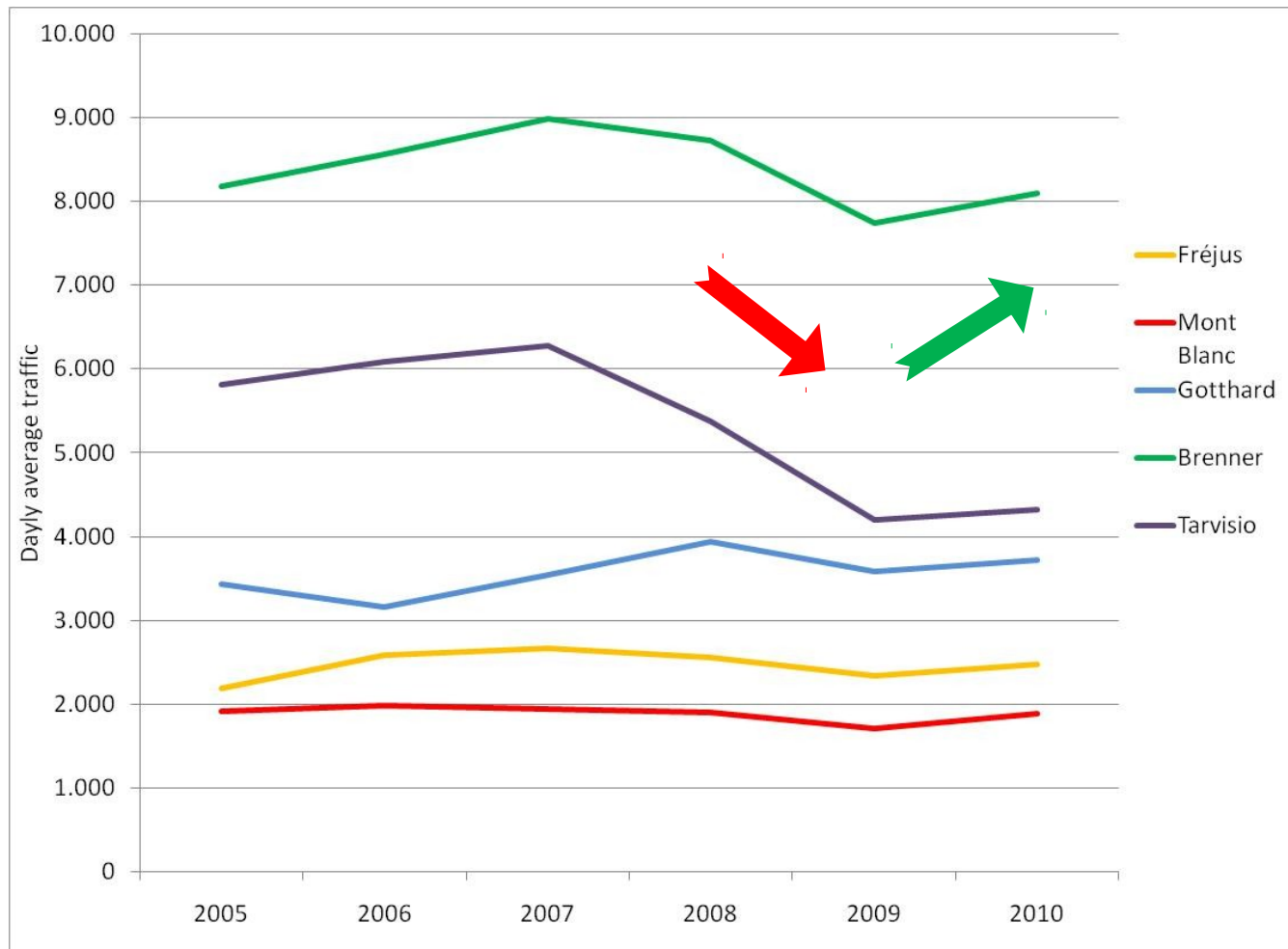
n°11: Transport employments

n°12: Health impact

Indicator 1

Vehicles fluxes

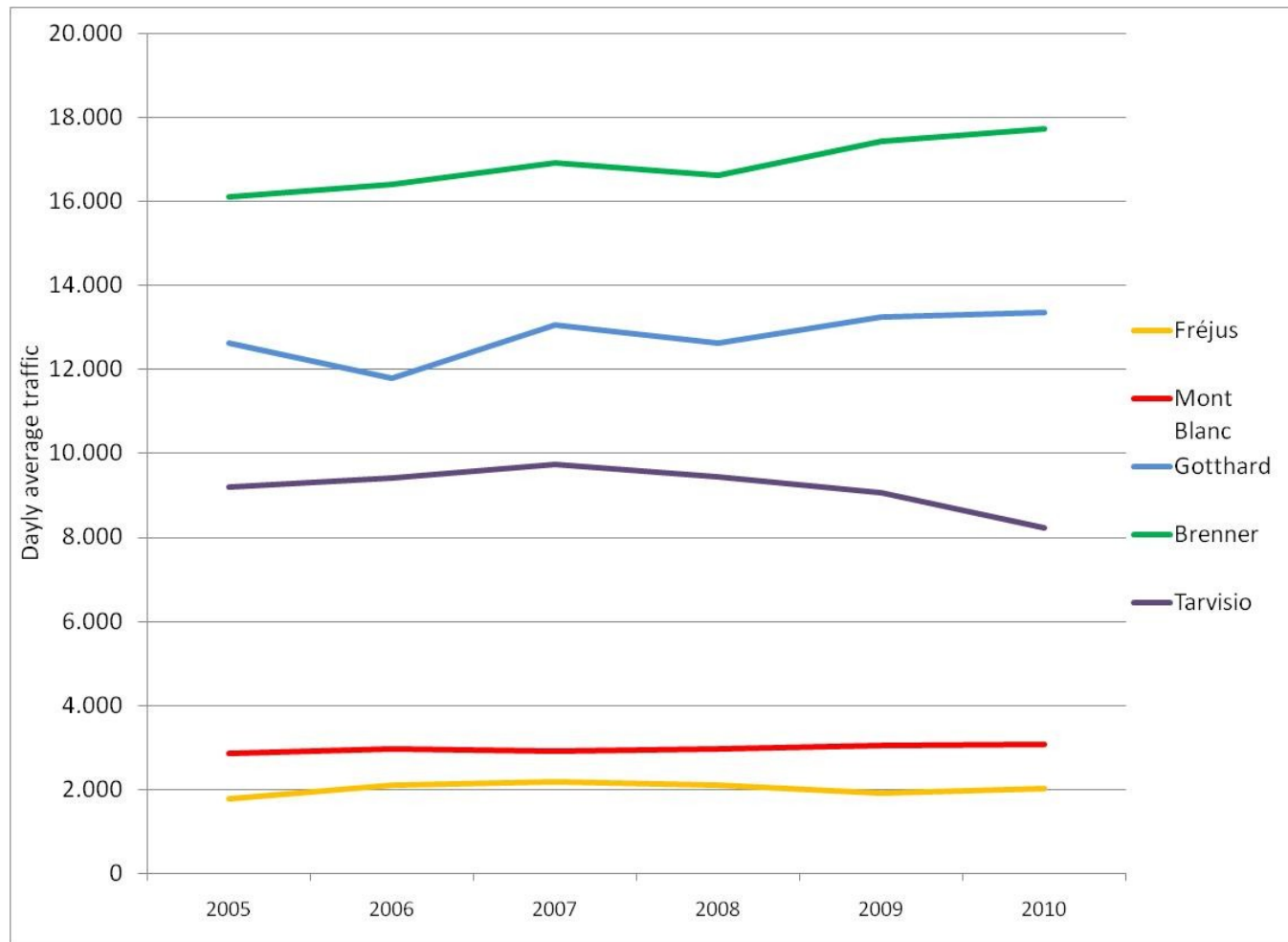
- Increase of HDVs fluxes for 2010, new situation “post crisis”



Indicator 1

Vehicles fluxes

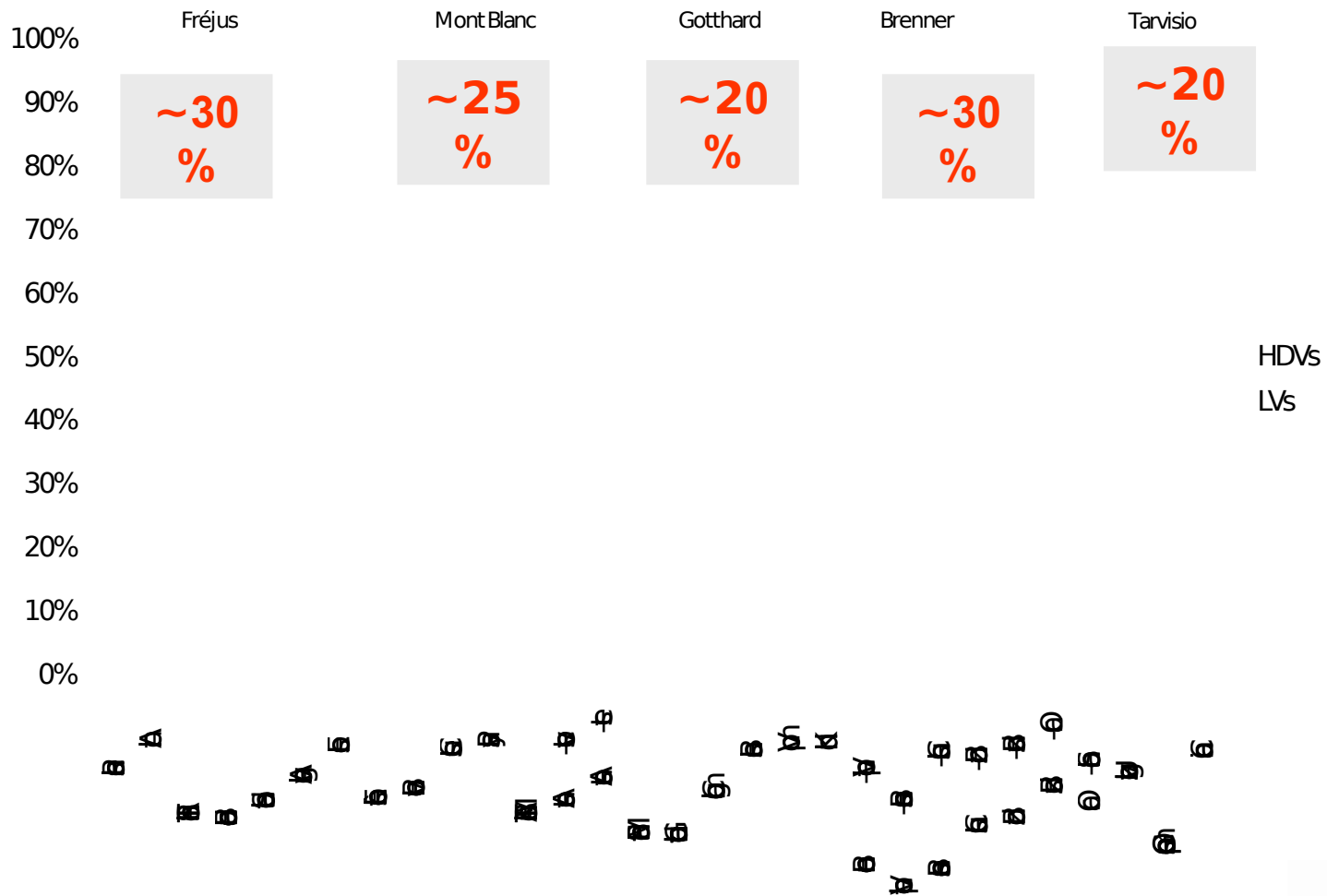
- Increase of the LV fluxes during the last years



Indicator 1

Vehicles fluxes

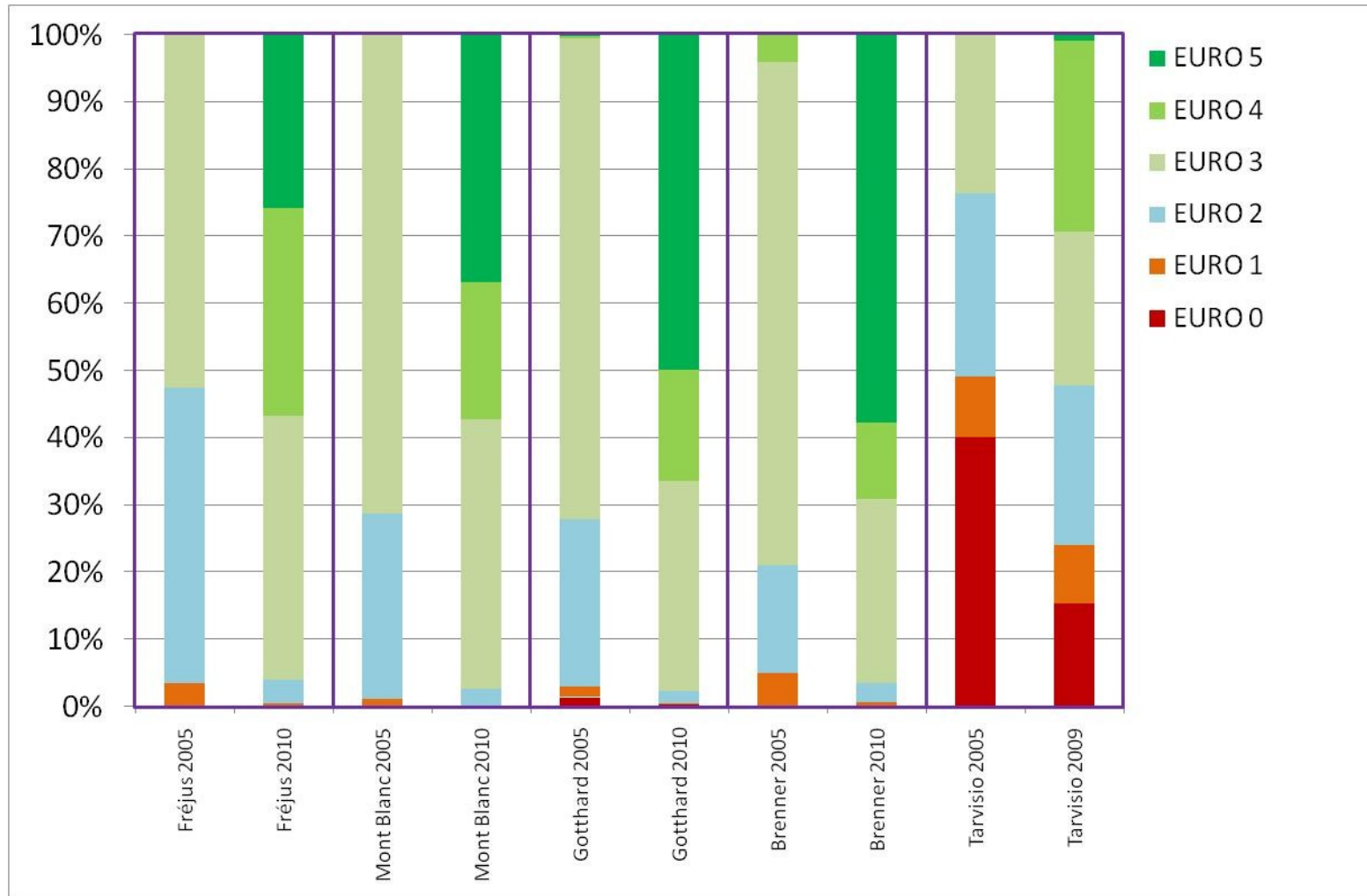
• HDVs / LVs ratios



Indicator 2

Vehicles fleets

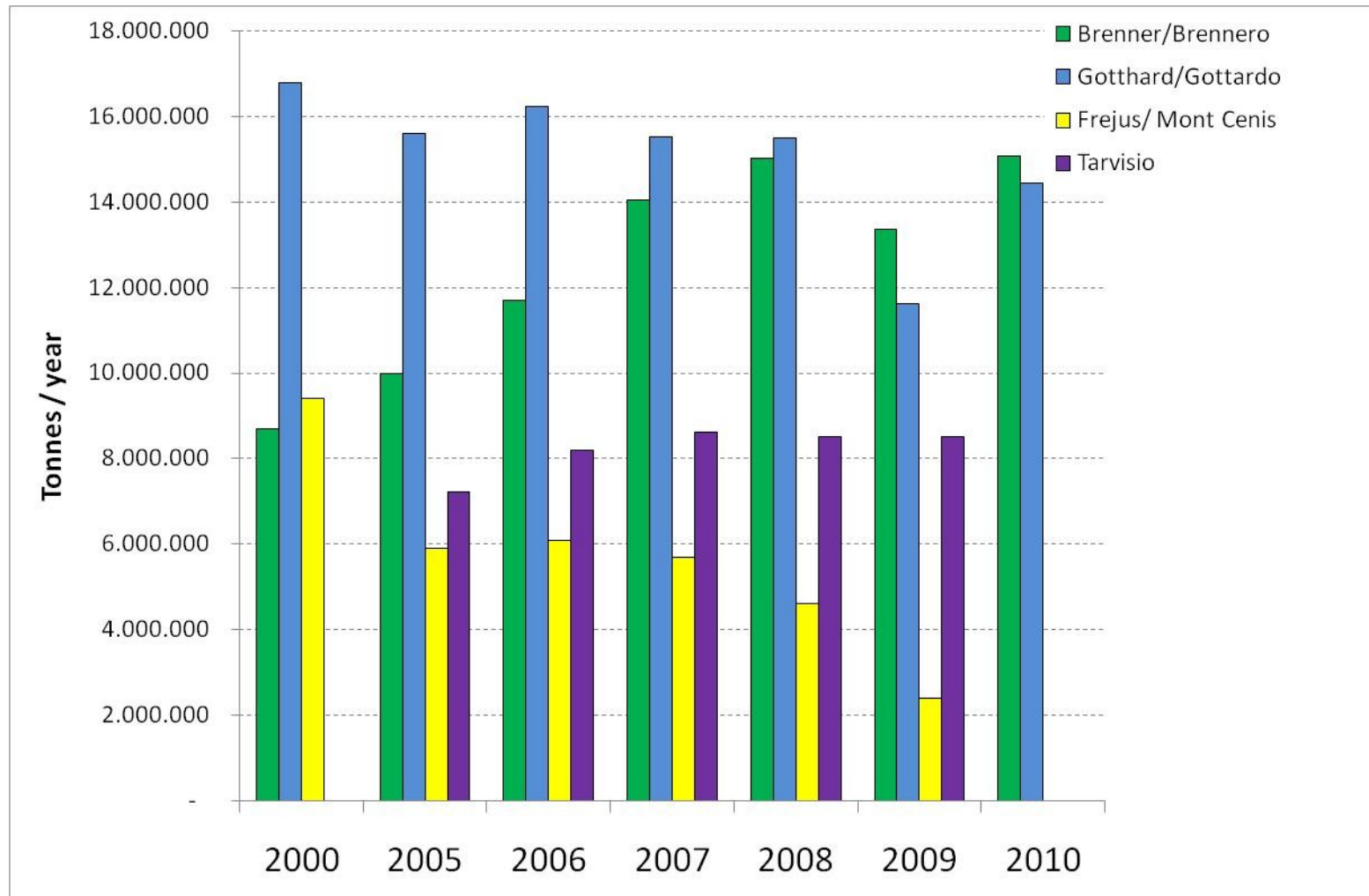
- HDVs fleets in the corridors: 2005-2010 trend



Indicator 3

Rail traffic fluxes

- Tonnes carried by rail: 2000-2010 trend



Indicator 3

Rail traffic fluxes

- Tonnes carried by road and rail (2008-2009 comparison)

ALPINFO data



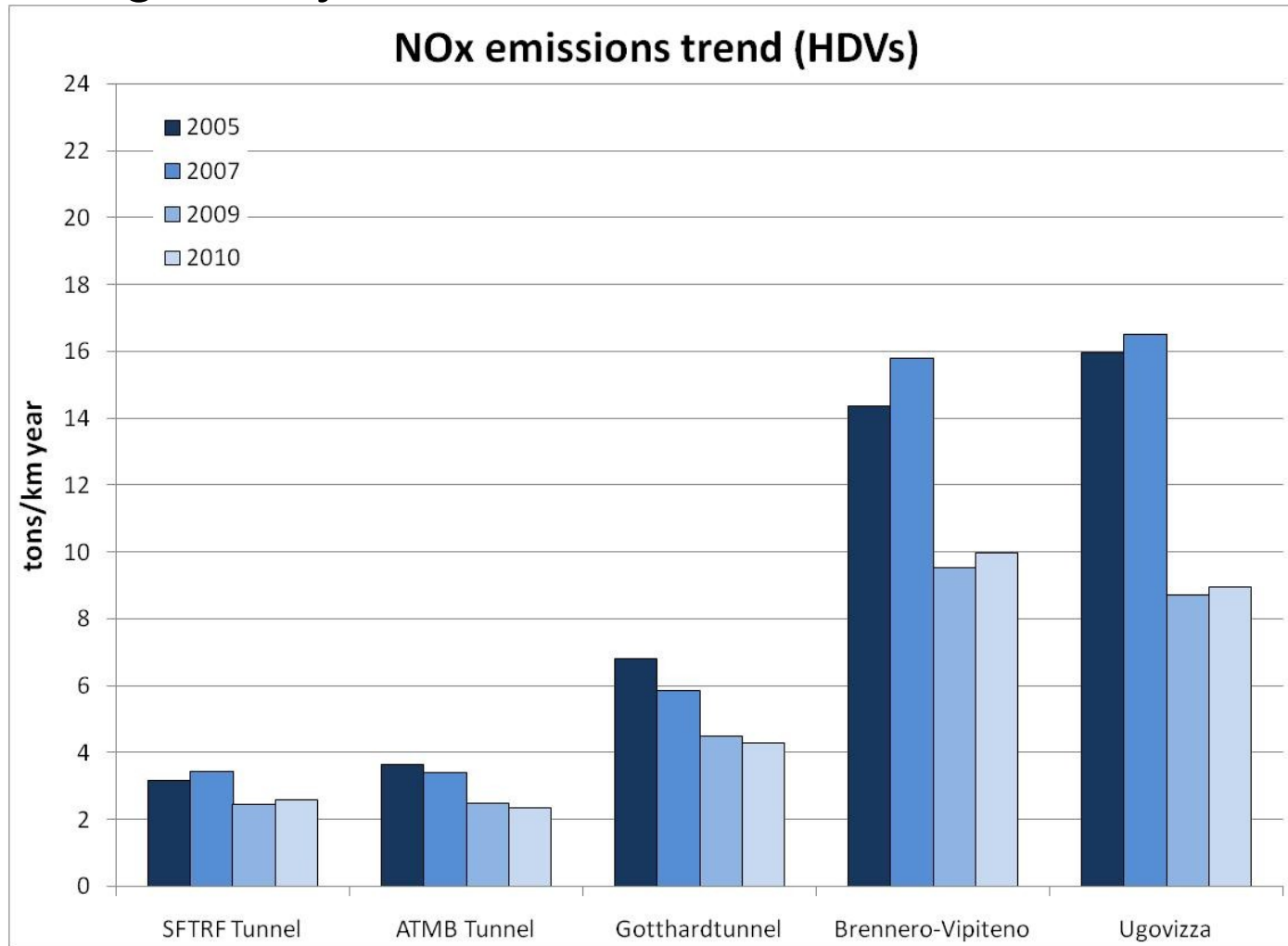
Repubblica e Cantone
Ticino



Indicator 4

Air pollutant emissions by road traffic

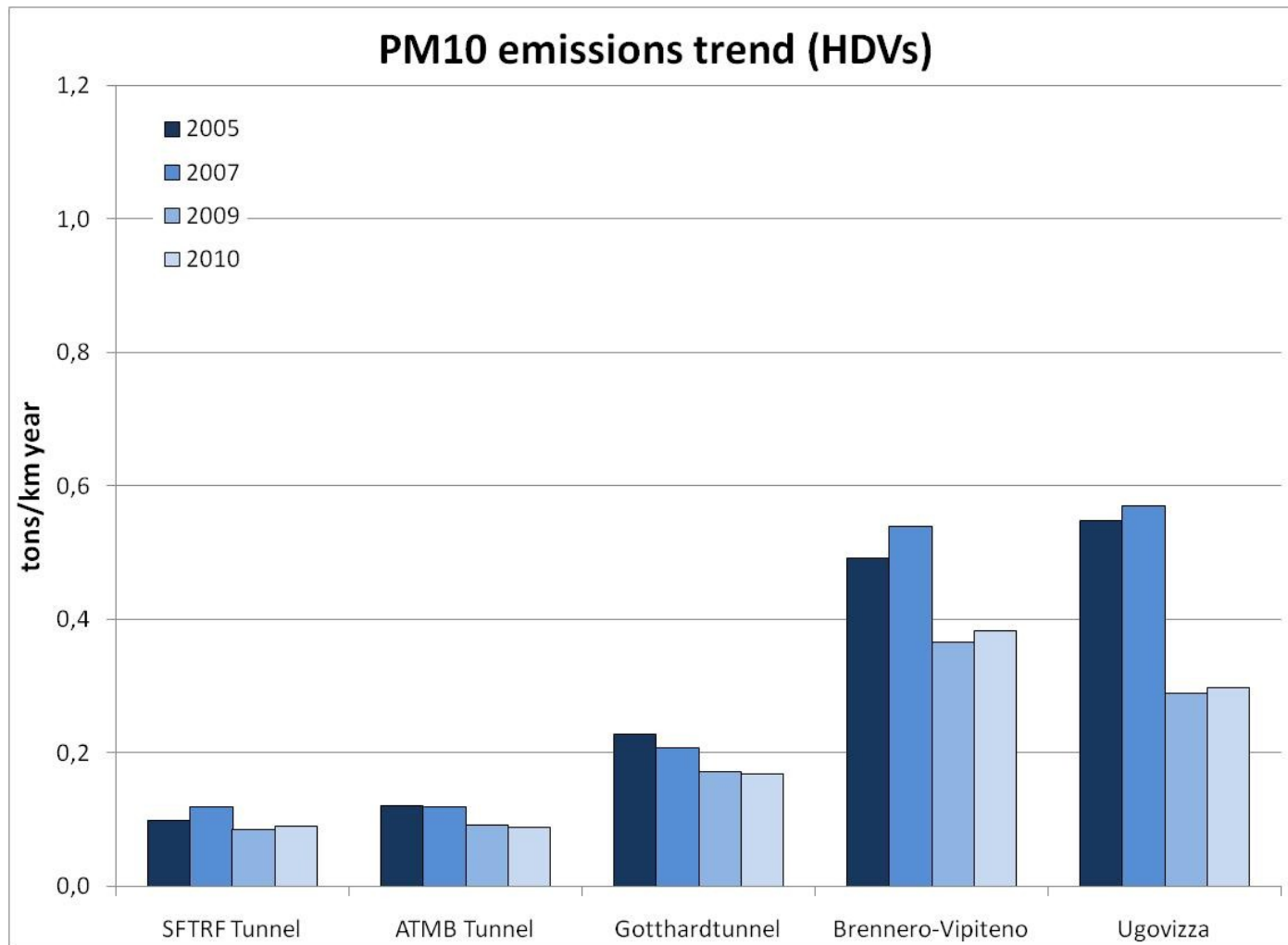
- Nitrogen Oxydes



Indicator 4

Air pollutant emissions by road traffic

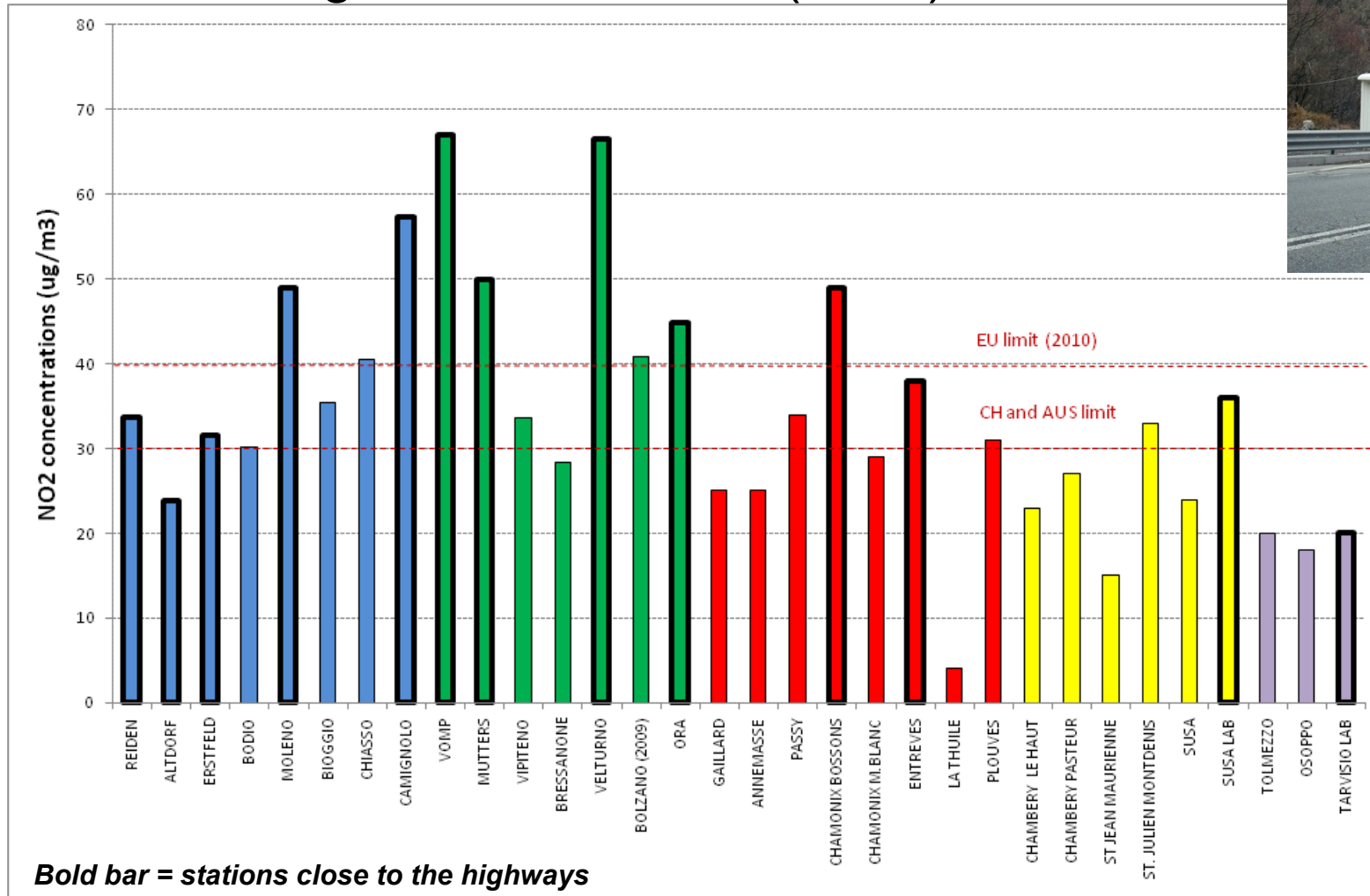
- Particulate PM10



Indicator 5

Air concentrations measured

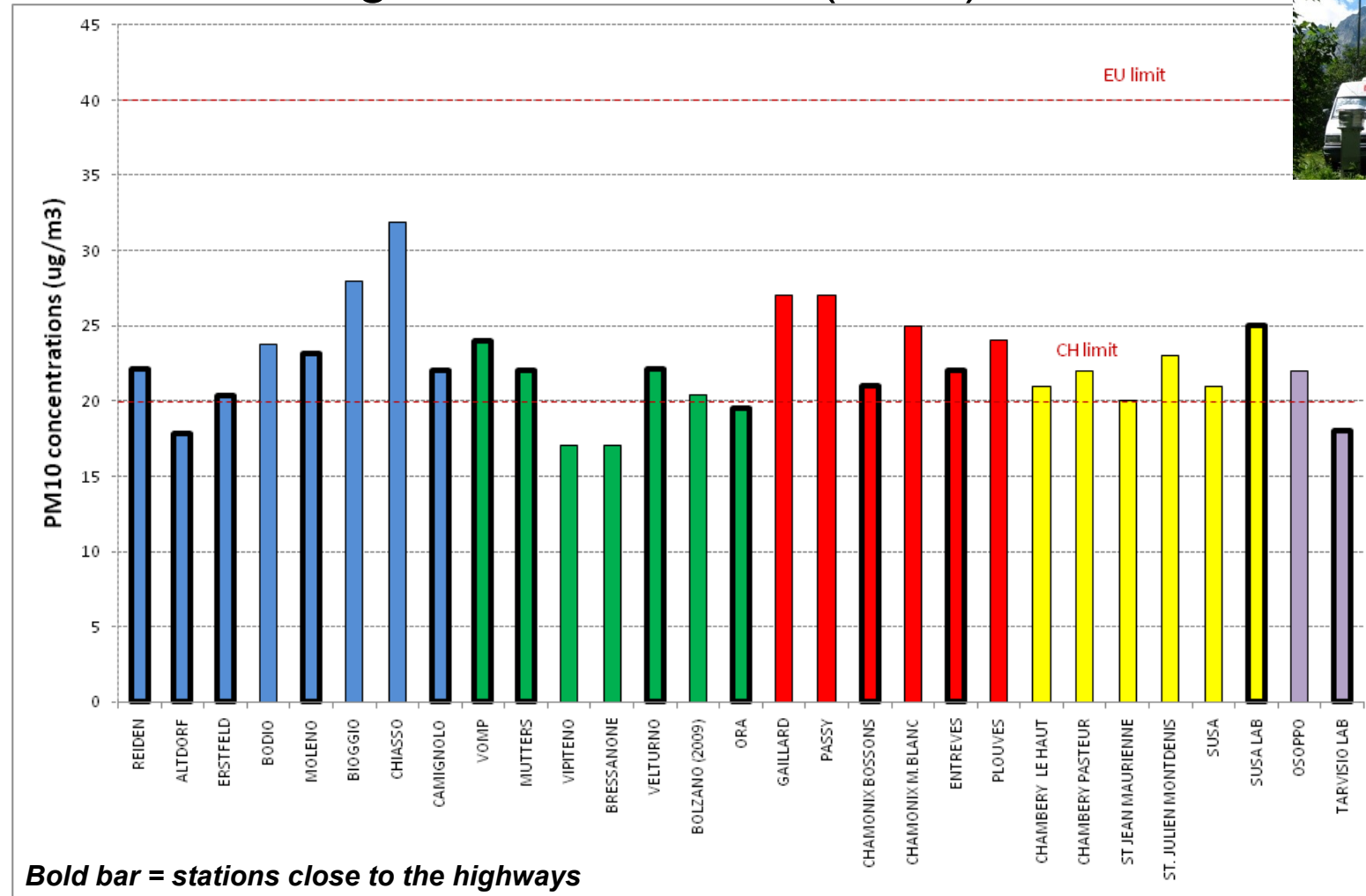
- NO₂ average concentrations (2010)



Indicator 5

Air concentrations measured

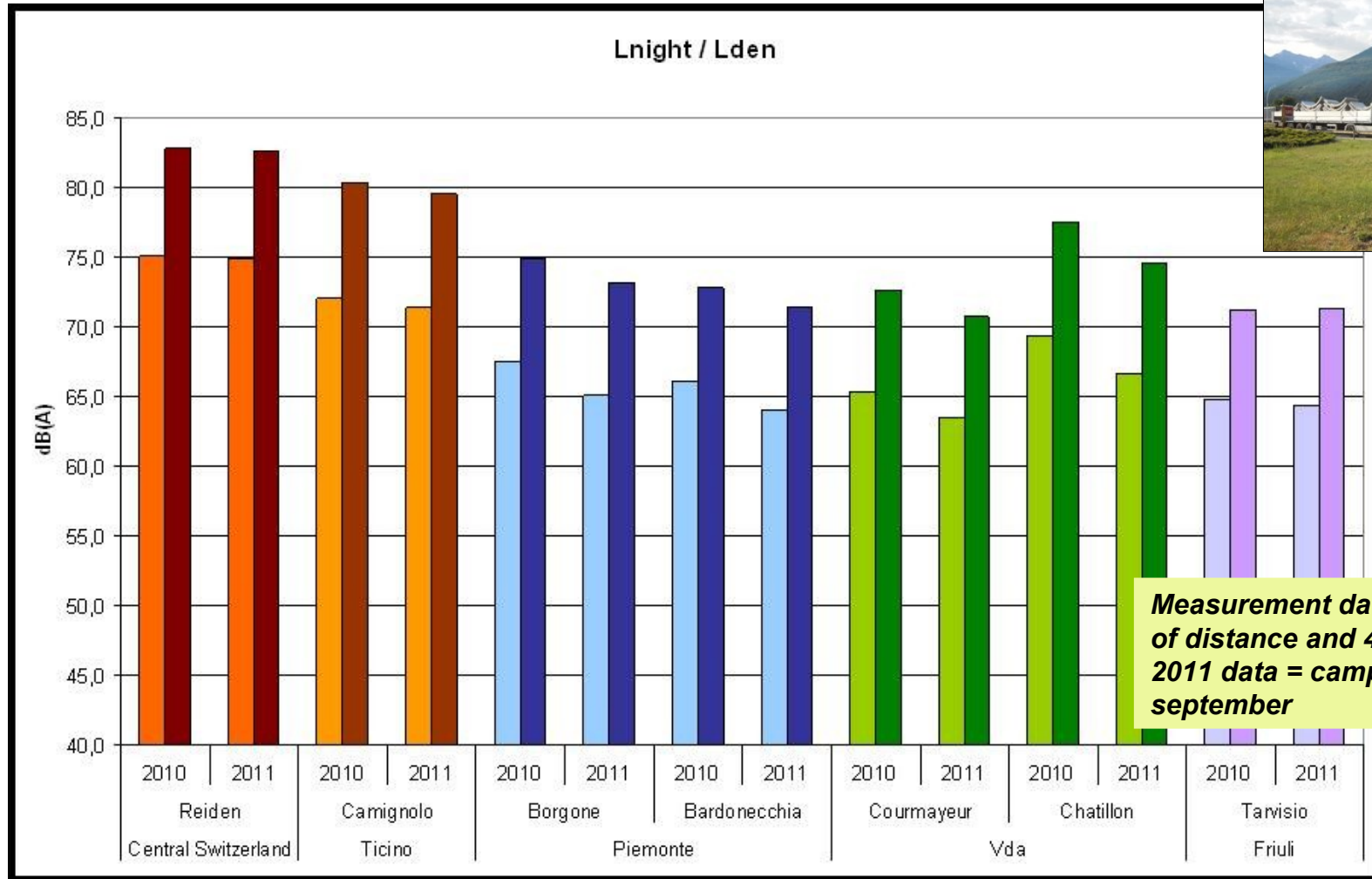
- PM10 average concentrations (2010)



Indicator 6

Noise assessment

- Noise level measured (2010-2011)

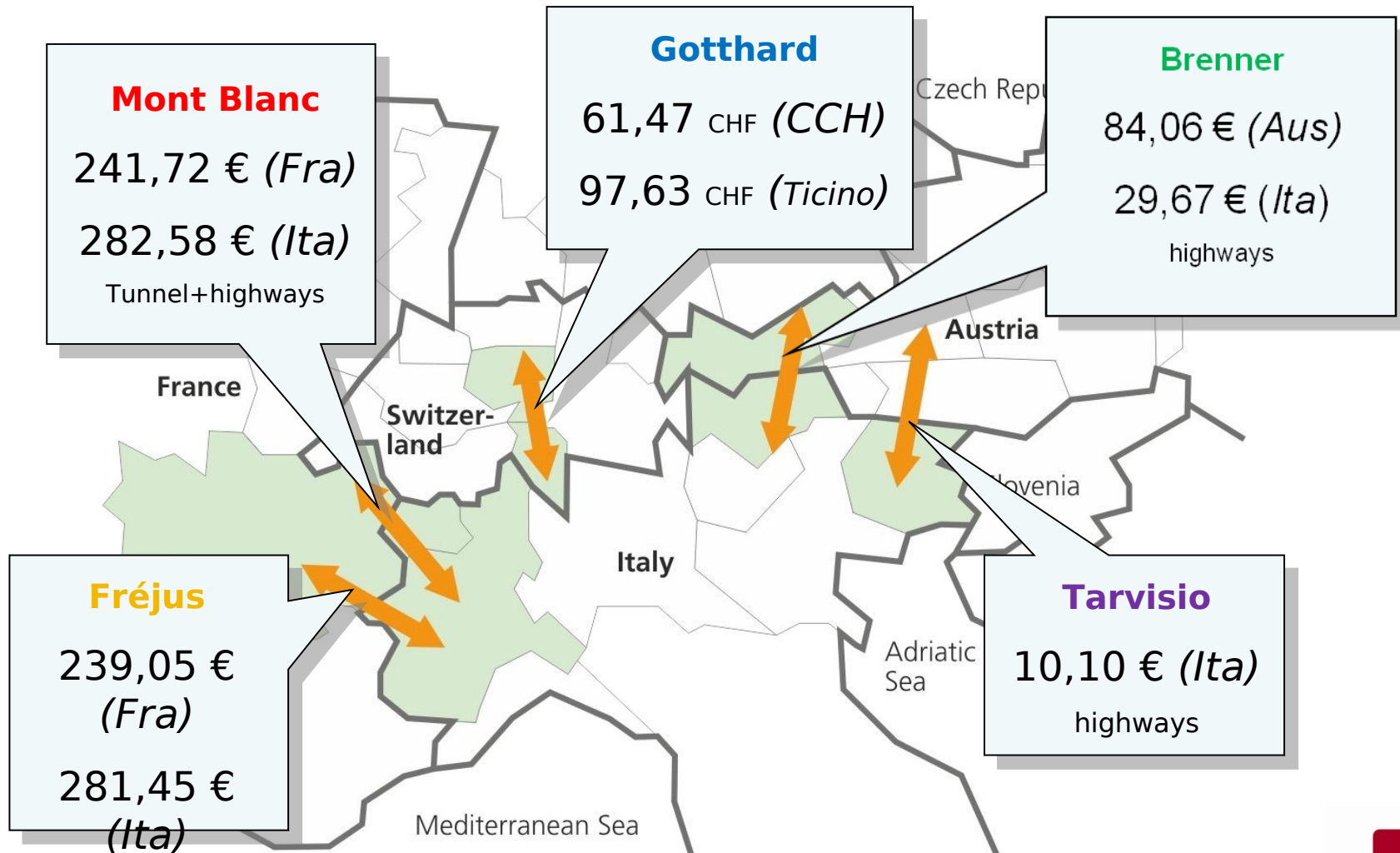


**Measurement data harmonized to 10 m of distance and 4 m of elevation
2011 data = campaigns from january to september**

Indicator 7

Toll prices

- Toll prices for Euro 5 Heavy duty vehicle, 40 t, 5 axes (2010)



Tunnel+highways



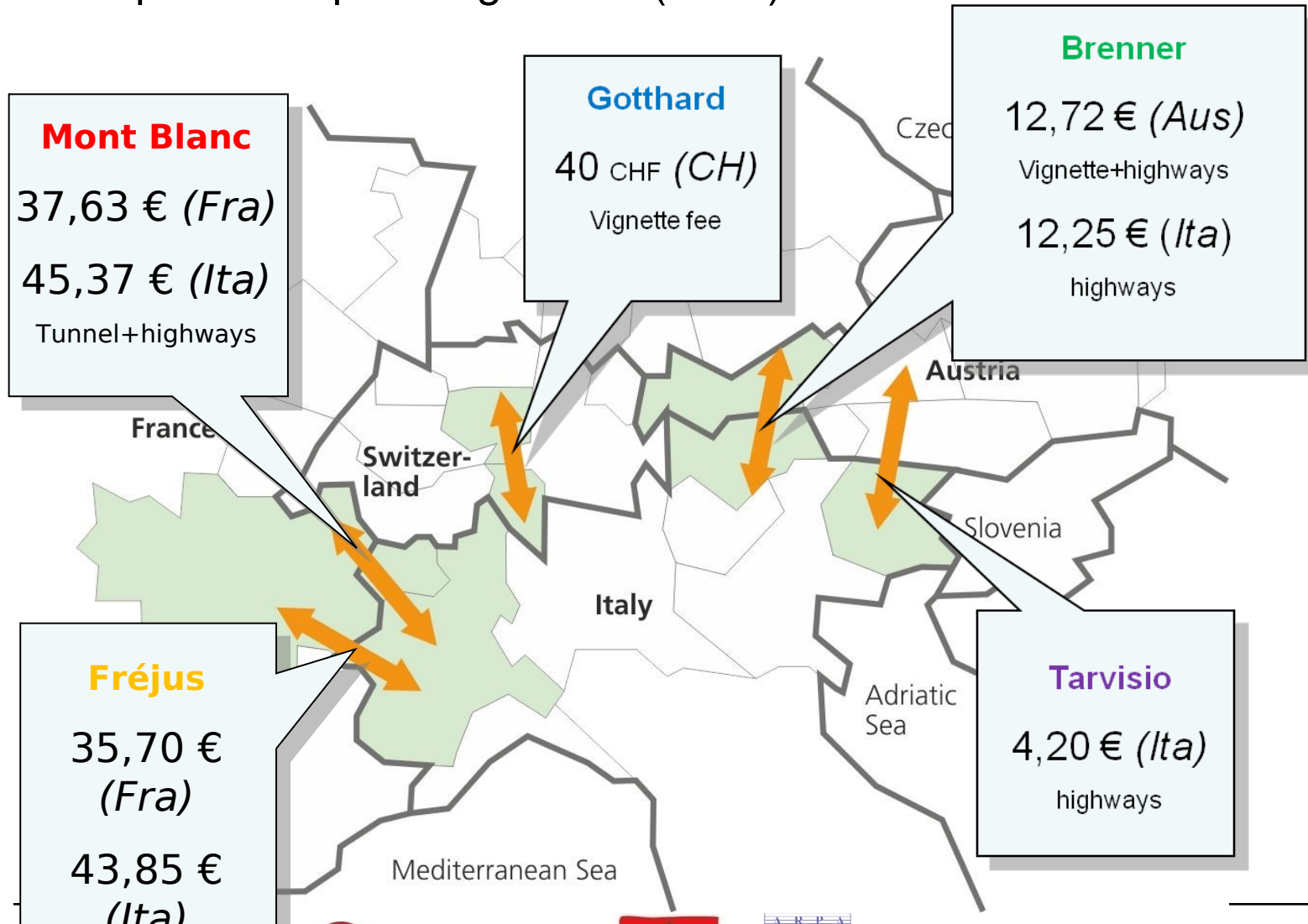
Repubblica e Cantone Ticino



Indicator 7

Toll prices

- Toll prices for passanger cars (2010)



Conclusions

- A synthetic evaluation comparing the 5 Imonitraf! Corridors of indicators 1-7 (2010 situation)

environmental analysis	Heavy duty vehicle fluxes (ind. 1)	Light vehicle fluxes (ind. 1)	Vehicle fleet (ind. 2)	Rail fluxes (ind. 3)	Road emissions (ind. 4)	Concentrations measured (ind. 5)	Noise levels (ind. 6)	Toll prices (ind. 7)	Score (average ind. 1-7)
<i>FREJUS</i>	2	2	2	4	2	2	3	2	2,4
<i>MONT BLANC</i>	2	2	2	NA	2	3	3	2	2,3
<i>GOTTHARD</i>	3	4	1	2	3	4	4	3	3,0
<i>BRENNER</i>	5	5	1	2	5	5	NA	3	3,7
<i>TARVISIO</i>	3	3	4	3	4	2	3	5	3,4

Legend for the values:

1 – very good

2 – good

3 – intermediate

4 – bad

5 – very bad

Conclusions

- A synthetic evaluation comparing the 5 Imonitraf! Corridors of indicators 1-7 (global trends 2005 – 2010)

2005-2010 environ. trend	Heavy duty vehicle fluxes (ind. 1)	Light vehicle fluxes (ind. 1)	Vehicle fleet (ind. 2)	Rail fluxes (ind. 3)	Road emissions (ind. 4)	Concentrations measured (ind. 5)	Noise levels (ind. 6)	Toll prices (ind. 7)
<i>FREJUS</i>	↑	↔	↑	↓	↓		↔	↑
<i>MONT BLANC</i>	↔	↔	↑		↓	↓	↔	↑
<i>GOTTHARD</i>	↑	↑	↑	↓	↓	↓	↔	↑
<i>BRENNER</i>	↔	↑	↑	↑	↓	↓		↑
<i>TARVISIO</i>	↓	↓	↑	↔	↓		↔	↑